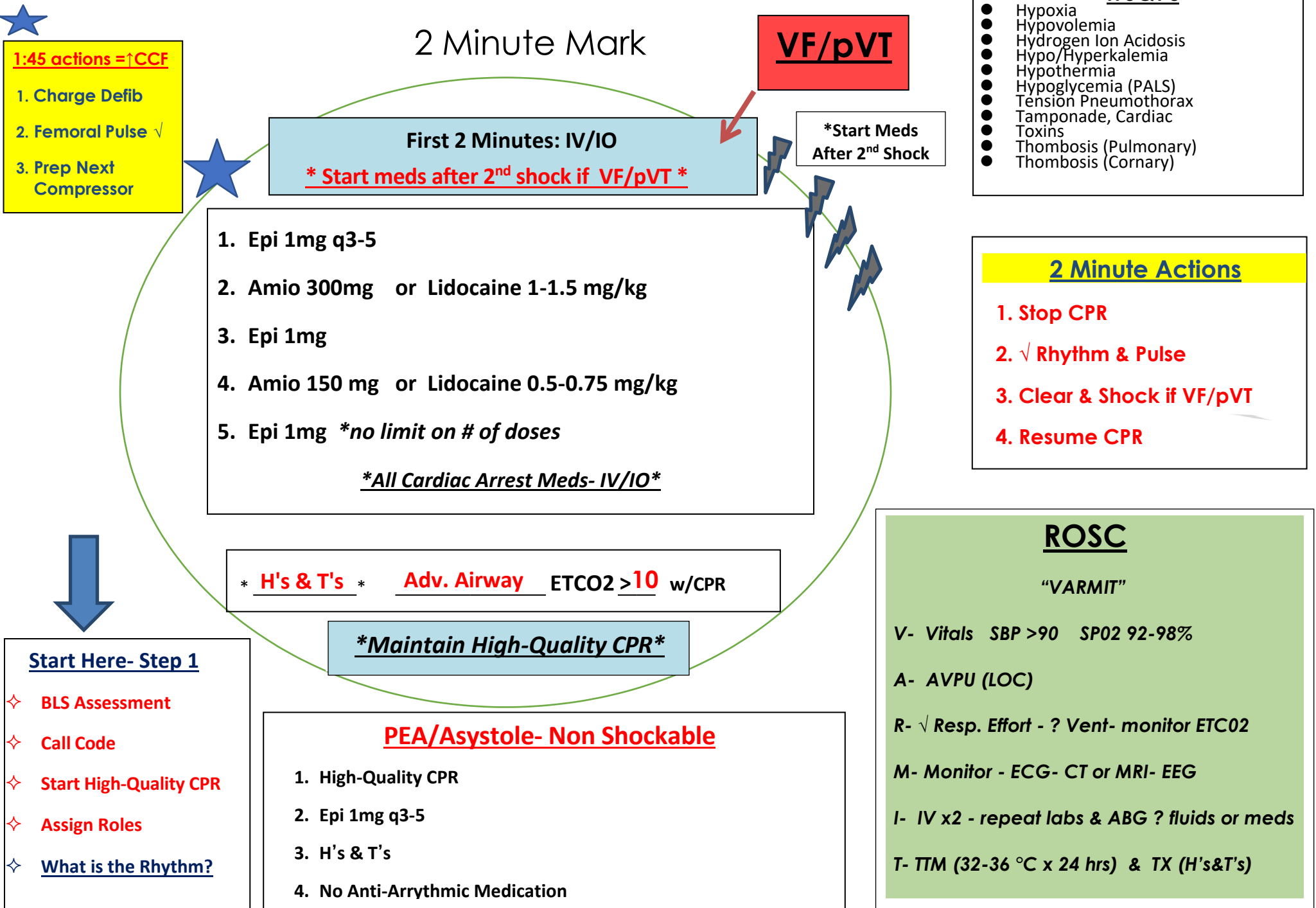


ACLS Cardiac Arrest/ROSC



1:45 actions = ↑CCF

1. Charge Defib
2. Femoral Pulse ✓
3. Prep Next Compressor

2 Minute Mark

VF/pVT

First 2 Minutes: IV/IO

*** Start meds after 2nd shock if VF/pVT ***

***Start Meds After 2nd Shock**

1. Epi 1mg q3-5
 2. Amio 300mg or Lidocaine 1-1.5 mg/kg
 3. Epi 1mg
 4. Amio 150 mg or Lidocaine 0.5-0.75 mg/kg
 5. Epi 1mg **no limit on # of doses*
- *All Cardiac Arrest Meds- IV/IO***

*** H's & T's * Adv. Airway ETCO2 >10 w/CPR**

Maintain High-Quality CPR

Start Here- Step 1

- ◇ BLS Assessment
- ◇ Call Code
- ◇ Start High-Quality CPR
- ◇ Assign Roles
- ◇ What is the Rhythm?

PEA/Asystole- Non Shockable

1. High-Quality CPR
2. Epi 1mg q3-5
3. H's & T's
4. No Anti-Arrhythmic Medication

- H's & T's**
- Hypoxia
 - Hypovolemia
 - Hydrogen Ion Acidosis
 - Hypo/Hyperkalemia
 - Hypothermia
 - Hypoglycemia (PALS)
 - Tension Pneumothorax
 - Tamponade, Cardiac
 - Toxins
 - Thombosis (Pulmonary)
 - Thombosis (Cornary)

2 Minute Actions

1. Stop CPR
2. ✓ Rhythm & Pulse
3. Clear & Shock if VF/pVT
4. Resume CPR

ROSC

"VARMIT"

V- Vitals SBP >90 SP02 92-98%

A- AVPU (LOC)

R- ✓ Resp. Effort - ? Vent- monitor ETCO2

M- Monitor - ECG- CT or MRI- EEG

I- IV x2 - repeat labs & ABG ? fluids or meds

T- TTM (32-36 °C x 24 hrs) & TX (H's&T's)